

IP Kamera 9070CSW Quick Installation

- 1.) Unplug the device including the following
 - Power Cable
 - RJ45 Ethernet Cable
 - Edimax USB dongle if connected
- 2.) First plug in the power to the device, second plug in the USB dongle, Lastly plug in the network cable

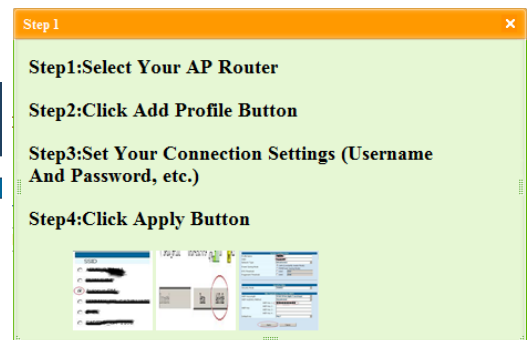
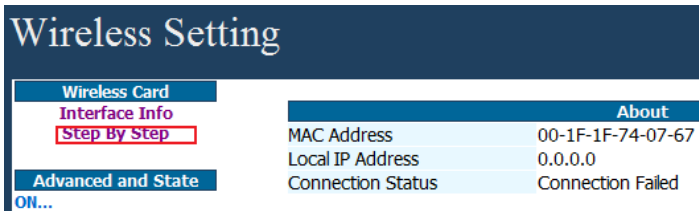



- 3.) Then Open IP edit and Login to the 9070 IP Kamera.

- 4.) Next go to the network  settings on the bottom and select Wireless. A new window should pop up with the wireless settings

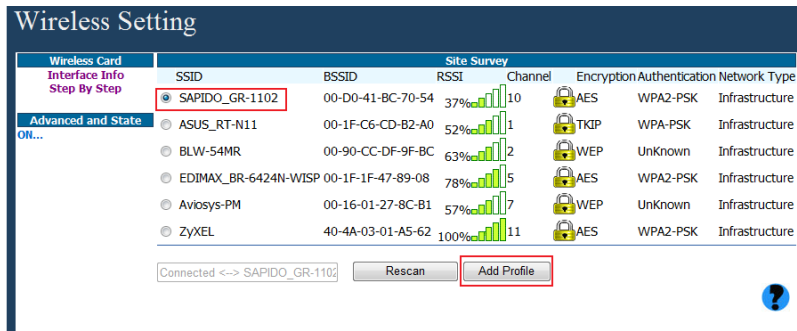


- 5.) Select the Step by Step option on the wireless screen.

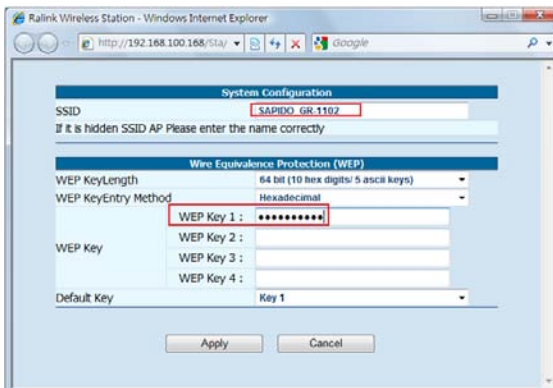


- 6.) Click on the  for more information on how to setup the device.

7.) Pick the router that you are using, then hit the add profile button



8.) Type in the passphrase for the router and hit the apply button.



9.) Wait about 60 seconds for device to connect.

Connecting.....About 60 seconds....

10.) Then check to see for the connection successful under the connection status and the device is good to go.

About	
MAC Address	00-1F-1F-74-07-67
Local IP Address	192.168.100.2
Connection Status	Connection Successful <--> SAPIDO_GR-1102

11.) Unplug the RJ45 cable of the device and search on IPedit for the new wireless settings. You will see a (W) next to your device in IPedit which means wireless is activated. If the RJ45 cable is not disconnect you will see two IP Address on the device.

